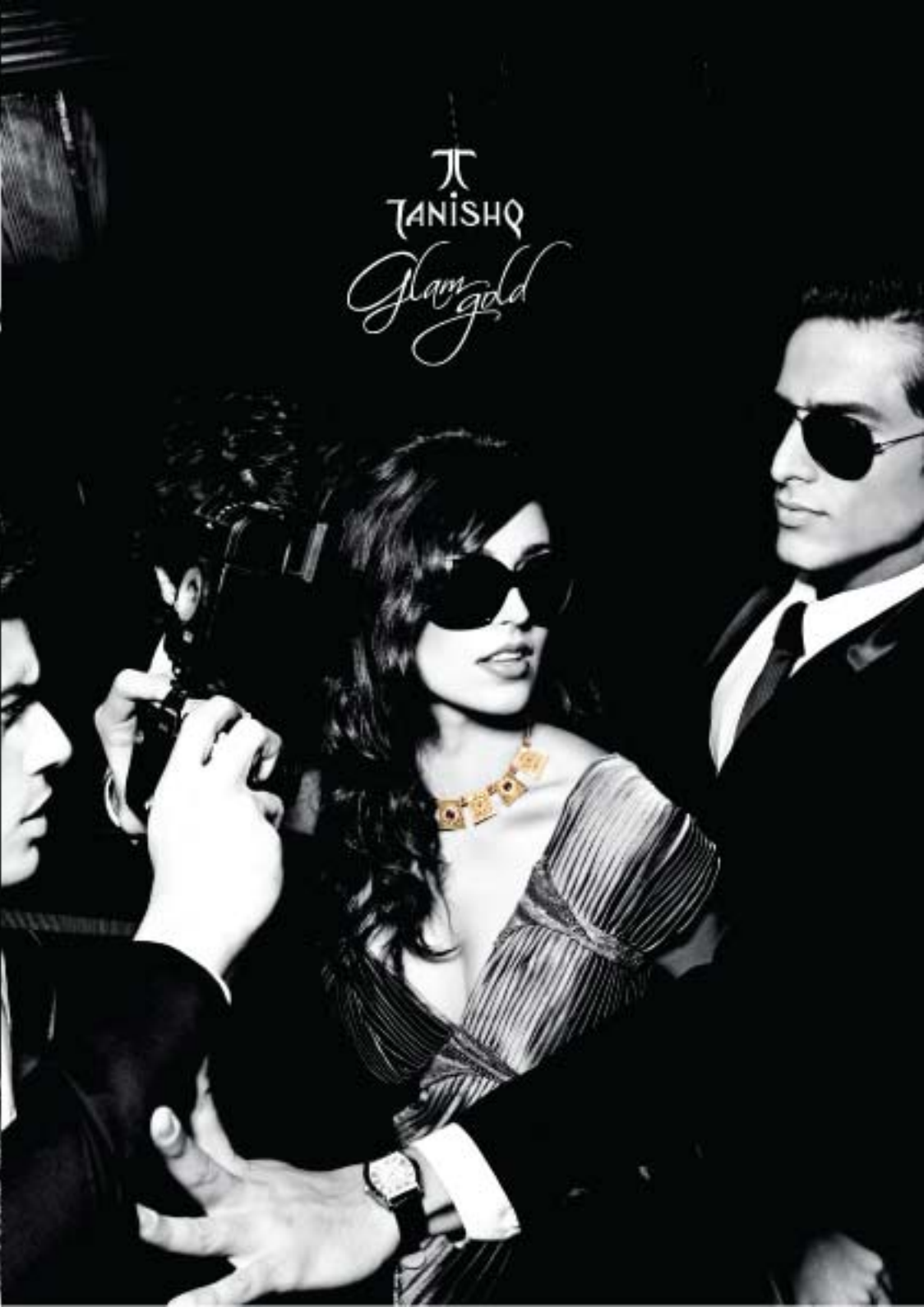


WORLD GOLD COUNCIL

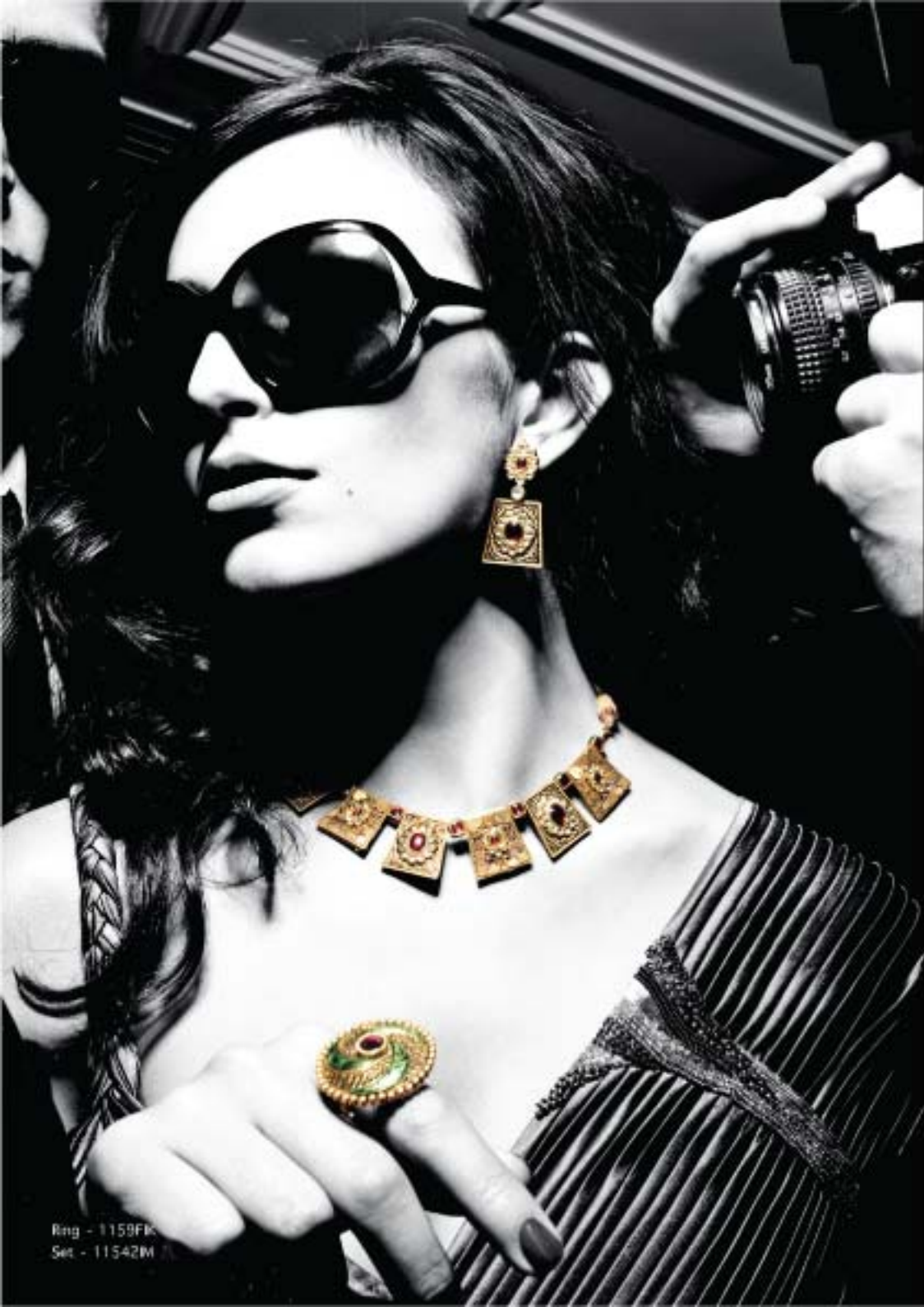


π
TANISHQ

π
TANISHQ
Glam gold



π
TANISHQ
Glam gold



Red carpet adventures in gold

Tanishq Glam Gold has arrived.

Get used to being the centre of attention with this collection of 22 karat gold jewellery in boldly different forms. An adventurous combination of exquisite Cuttack wirework with Jaipuri enamel and kundan. A daring fusion of different looks and techniques. In simple yet contemporary and geometric styles. This eclectic range includes earrings, necklaces, brooches, waistbelts, back ornaments, arm bands and shoulder ornaments.

T
TANISHQ
Glam gold

Waistbelt - 1159XIG
Shoulder Ornament - 1159XIF



This elegant waistbelt is crafted with flowing strings of Cuttack filigree gold beads and red enamel beads that culminate in a dazzling flower with gold petals that spiral out to create a hypnotic effect.



An eye-catching pink against paired red, flanked by intricate Cuttack filigree petals with green kundan stones embraces the soft curve of the shoulder and spills over into striking coloured droplets, making for an inimitable accessory.

Earring - 11540IV
Set - 11542IV



Necklace - 11541IV



Inspired by the traditional bangle design, this intricately crafted gold disc possessively embraces a vibrant pink Rajasthani floral motif in enamel.

Set - 115420B

Necklace - 1154ND



Rectangles of red and white enamel flowers surround a striking diamond shaped Kundan stone that is held together by a border of fine Cuttack filigree.



Intricate filigree geometric forms combine with peacock-blue chatai enamel with captivating red centres to form this enchanting necklace.



This dramatic eye shaped pendant is a traditional form reconstructed with Cuttack filigree and kundan set stones in deep blue enamel base embellished with floral patterns.



A fine kundan set flower sits above a large Cuttack filigree drop which is delicately laced by an intricate border of emerald green enamel.





Inspired by the Calcutta Paan, this Cutwork Filigree necklace embellished with red and green coloured stones set in kundan, is an exotic blend of the east and the west.



A delicate kundan bloom rests on a bed of exquisite gold flowers, surrounded by rows of studded red and white kundan work and pays a grand tribute to the traditional Timasha pendant of Rajasthan.

Set - 11542G



A captivating combination of gold sheet-work and Cuttack filigree spiral from a contemporary octagonal shape into an exquisitely embossed disc centre.

Set - 115420G



Geometrical forms with red and green enamel patterns alternate with Cuttack filigree units on a gold border base to create this alluring necklace.

Set - 11542R



Intricately set kundans in gold swirls are held from gorgeous geometric shapes of Cuttack filigree work that alternate with red enamel squares to form an elegant neckpiece with matching earrings.

Set - 11542Q



This exquisite necklace holds an intricate row of Cuttack filigree hexagons with Attribis blue enamel centres, suspended delicately from saffron enamel extensions.



Armband - 1159XB

This Bharbhari Bazubandi captures the colourful spirit of Rajasthan with an intricate filigree armband with red and green enamel floral motifs and Rhodo garnets. Gold tassels at the other end of a connected ribbon of red saari threads can be veiled around the neck for that extra bit of drama.

Set - 11542ff



This neckpiece is a geometric masterpiece that brings together green enamel and red cabochon stones into a splendid series of rectangles that alternate with rich panels of filigree with contemporary styled jhumkis to match.



Fine rectangular units in Cuttack Filigree work hold within it hexagonal red enamel cores with intricately set kundan stones.



Geometric panels of blue enamel with kundan combine with panels of filigree to harmonize into a stunningly unusual neckpiece.

Set - 11542IV





This eclectic blend of traditional flame red flowers and enamel green leaves alternate with contemporary patterns of coiled gold wire to create a mesmerizing effect.





Antique finished lattice windows or jharokhas, bring alive the spirit of Rajasthan and are interspersed with turquoise and filigree flowers in an unusual but striking combination.

Set - 115420f

Set - 115420f



Stunning green, blue and orange enamel work with white kundan stones and marquis units of Cuttack diamonds in filigree form this neckwear.



Oval chequered cut citrine stones enclosed in peacock blue, green and orange enamel alternate with geometric filigree shapes to create this spectacular neckpiece.

Necklace - 1139PGW

Set - 11542IP

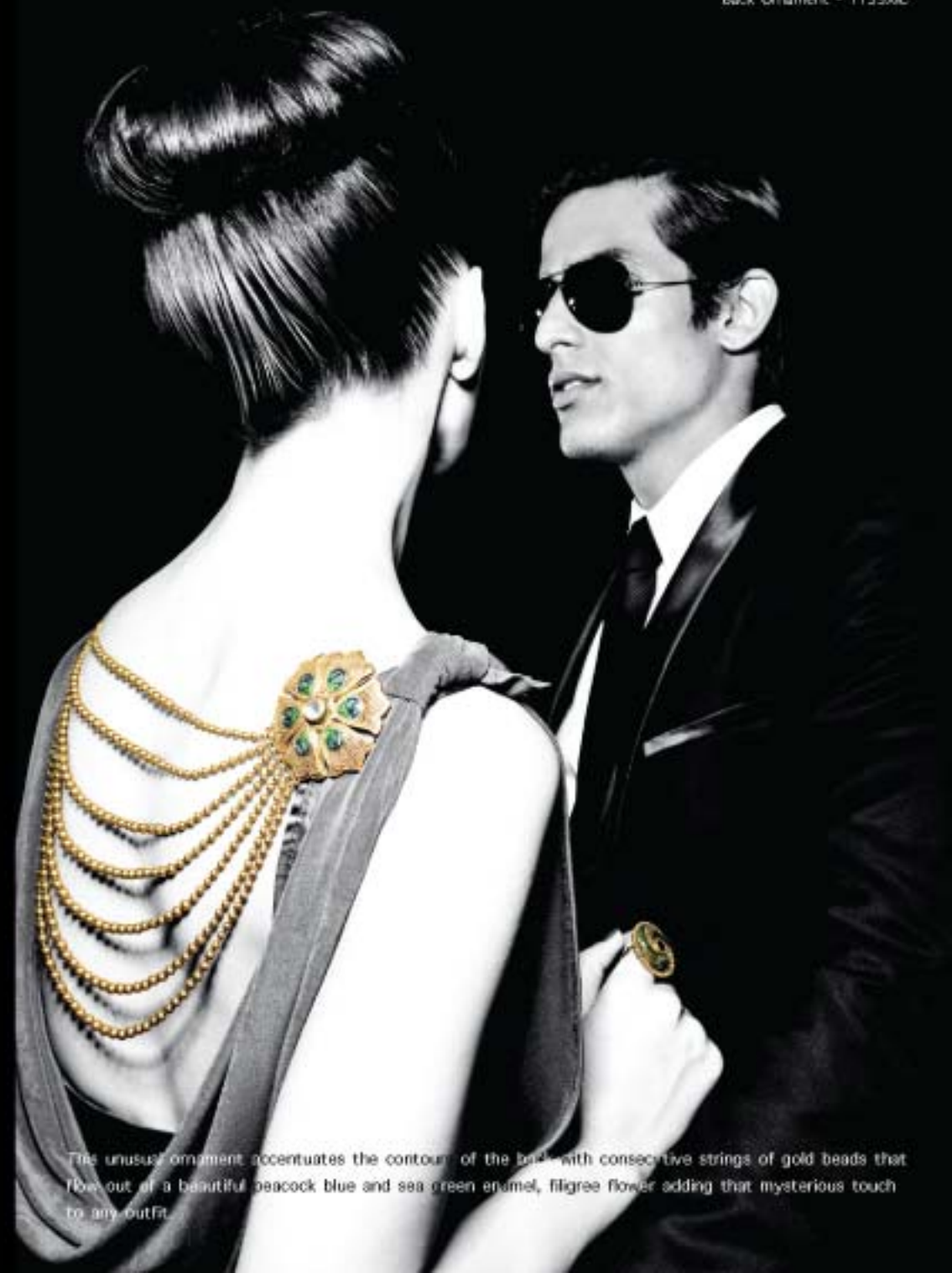


A string of antique jasmines with blue carved turquoise centres gracefully drop down into a richly contrasting ruby droplet in the form of a majestic pendant.



A glamorous ensemble of drop shaped jaali work is held together by an intricate mosaic of glass, kundan and gorgeous green stones.

π
TANISHQ
Glam gold



The unusual ornament accentuates the contour of the back with consecutive strings of gold beads that flow out of a beautiful peacock blue and sea green enamel, filigree flower adding that mysterious touch to any outfit.